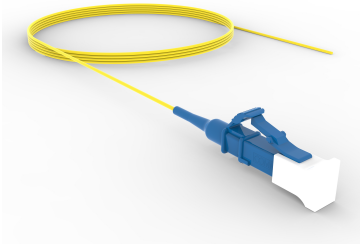


FAWLCCUC01



TeraSPEED® LC/UPC to Unconnectorized, Fiber Pigtail, 0.9 mm Tight Buffer

Product Classification

Regional Availability	Asia Australia/New Zealand China Europe India Latin America Middle East/Africa North America
Portfolio	CommScope®
Product Type	Fiber pigtail, unjacketed
Product Brand	SYSTIMAX InstaPATCH® 360
Ordering Note	Minimum length may vary based on cable configuration

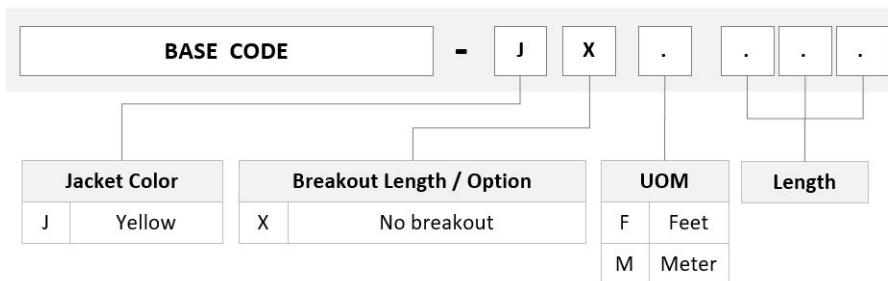
General Specifications

Color, boot A	Blue
Color, connector A	Blue
Interface, Connector A	LC/UPC
Jacket Color	Yellow
Total Fibers, quantity	1

Dimensions

Cable Assembly Length Range (m)	1 – 20
Cable Assembly Length Range (ft)	1 – 66

Ordering Tree



FAWLCUC01

Mechanical Specifications

Cable Retention Strength, maximum 1.00 lb @ 0° | 1.00 lb @ 90°

Optical Specifications

Fiber Mode Singlemode

Fiber Type G.652.D | G.657.A1, TeraSPEED®

Environmental Specifications

Operating Temperature -10 °C to +60 °C (+14 °F to +140 °F)

Environmental Space Unrated

Packaging and Weights

Packaging quantity 2

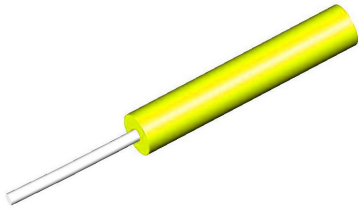
Regulatory Compliance/Certifications

Agency	Classification
ANATEL	Compliant
CHINA-ROHS	Below maximum concentration value
ISO 9001:2015	Designed, manufactured and/or distributed under this quality management system
REACH-SVHC	Compliant as per SVHC revision on www.commscope.com/ProductCompliance
ROHS	Compliant
UK-ROHS	Compliant



Included Products

- 760038570 – TeraSPEED® 900µm Tight Buffered Fiber
- X-TB-8W-YL-F/G
- 860657283 – LC/UPC Connector, Singlemode, Blue

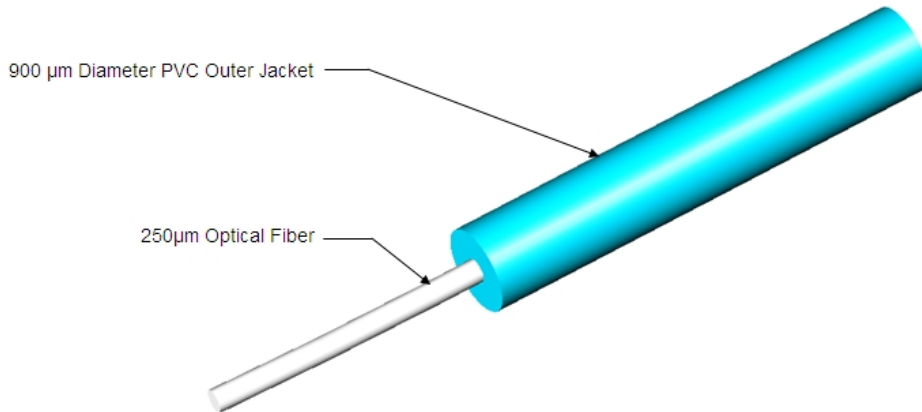


TeraSPEED® 900µm Tight Buffered Fiber

Product Classification

Regional Availability	Asia Australia/New Zealand EMEA Latin America North America
Portfolio	CommScope®
Product Type	Fiber indoor cable

Representative Image

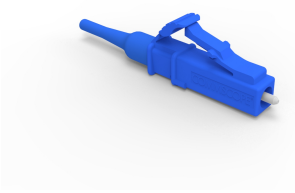


Regulatory Compliance/Certifications

Agency	Classification
CHINA-ROHS	Below maximum concentration value
ISO 9001:2015	Designed, manufactured and/or distributed under this quality management system
REACH-SVHC	Compliant as per SVHC revision on www.commscope.com/ProductCompliance
ROHS	Compliant
UK-ROHS	Compliant



LC/UPC Connector, Singlemode, Blue



Product Classification

Regional Availability	Asia Australia/New Zealand EMEA Latin America North America
Portfolio	CommScope®
Product Type	Fiber connector

General Specifications

Color, boot	Blue
Color, housing	Blue
Interface	LC/UPC

Dimensions

Length	39.6 mm 1.559 in
Compatible Cable Diameter	0.9 mm 0.035 in

Material Specifications

Ferrule Material	Zirconia
-------------------------	----------

Mechanical Specifications

Cable Retention Strength, maximum	1.00 lb @ 0 °
--	---------------

Optical Specifications

Fiber Mode	Singlemode
Insertion Loss Change, mating	0.2 dB
Optical Components Standard	ANSI/TIA-568. 3-D IEC 61753-1
Insertion Loss Change, temperature	0.2 dB
Insertion Loss, maximum	0.34 dB
Return Loss, minimum	50 dB

Regulatory Compliance/Certifications

Agency	Classification
CHINA-ROHS	Below maximum concentration value
REACH-SVHC	Compliant as per SVHC revision on www.commscope.com/ProductCompliance
ROHS	Compliant
UK-ROHS	Compliant



* Footnotes

Insertion Loss Change, mating TIA-568: Maximum insertion loss change after 500 matings

Insertion Loss Change, temperature Maximum insertion loss change from -10 °C to +60 °C (+14 °F to +140 °F)