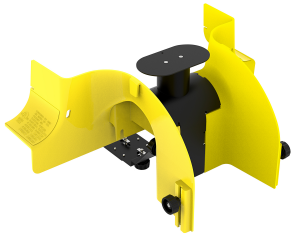


FGS-MEXP-GS-ABF-NC



FiberGuide® 6-Inch Express Exit™, Cover Not Included, Spool Bracket Included, 4x4, 4x6, 4x12, 4x24in, Yellow

Product Classification

Regional Availability	Asia Australia/New Zealand EMEA Latin America North America
Portfolio	CommScope®
Product Type	Express exit
Product Brand	FiberGuide®
Product Series	FGS

General Specifications

Color	Yellow
Orientation	Horizontal
Section Type	Express exit

Dimensions

System Dimensions	102 mm x 102 mm (4 in x 4 in) 102 mm x 152 mm (4 in x 6 in) 102 mm x 305 mm (4 in x 12 in) 102 mm x 610 mm (4 in x 24 in)
--------------------------	---

Ordering Tree

FGS-MEXP-GS-ABF-NC

FGS ⁹ B - MEXP - ¹⁰ A/B/F

Section Color

9	empty	yellow
	B	black

Section Size

10	A/B/F	4 x 4/6/12 in, with 2 x 2 in exit
	E-A/B/F	4 x 4/6/12 in, with 4 x 4 in exit
	F-F/H-NC	4 x 12/18/24 in, with 4 x 12 in exit, no cover
	G-A/B/F	4 x 4/6/12 in, with 4 x 6 in exit
	LP-A/B/F	4 x 4/6/12 in, with 2 x 2 in exit, low profile
	LP-CA	4 x 4/6/12 in, with 2 x 4 in exit, low profile
	LP-G	2 x 6 in, with 2 x 2 in exit, low profile
	GS-ABF-NC	4 x 4/6/12 in, with 4 x 6 in exit, no cover
	CV	cover
	NC	no cover

Material Specifications

Material Type Engineering Thermoplastic

Environmental Specifications

Flammability Rating CSA S143 | UL 2024 | UL 94 V-0

Halogen Characteristics Blue Angel | TCO '99 | WEEE

Safety Standard CSA | UL

Packaging and Weights

Included Spool Bracket

Weight, net 1.089 kg | 2.401 lb

Regulatory Compliance/Certifications

Agency

Classification

CHINA-ROHS

Below maximum concentration value

REACH-SVHC

Compliant as per SVHC revision on www.commscope.com/ProductCompliance

ROHS

Compliant

UK-ROHS

Compliant

