

REV	MCO	DWN	DATE
B	20006031	TH	31-OCT-97
C	20273892	GCC	29-SEP-09

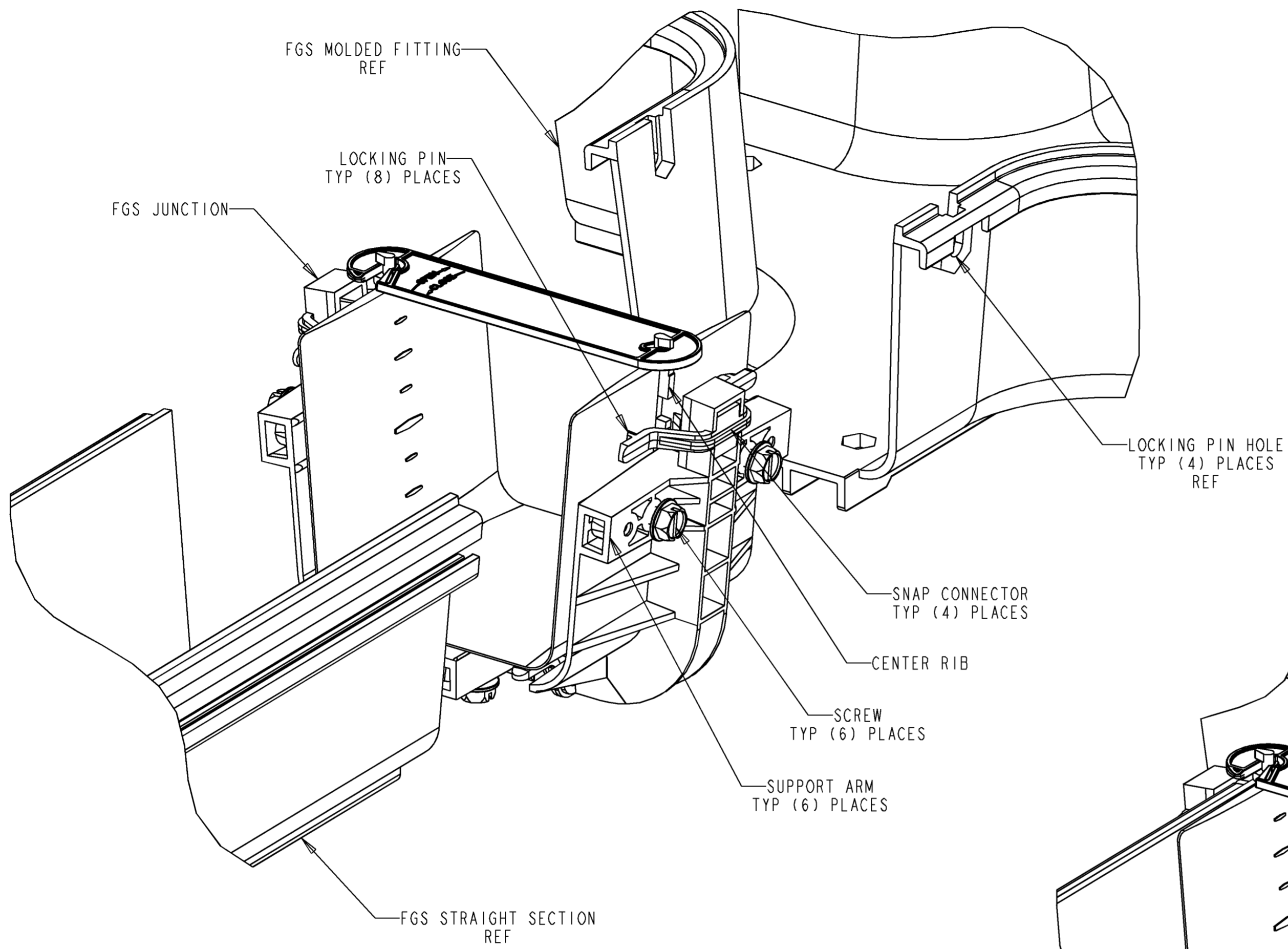


FIGURE 1

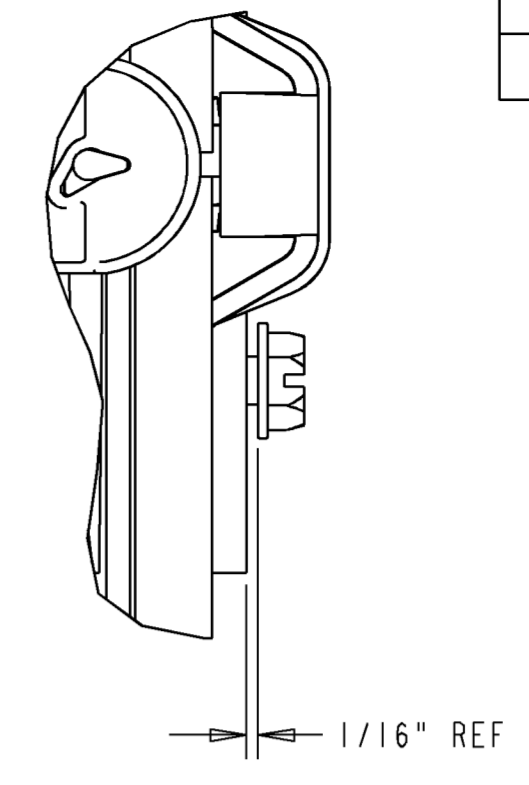
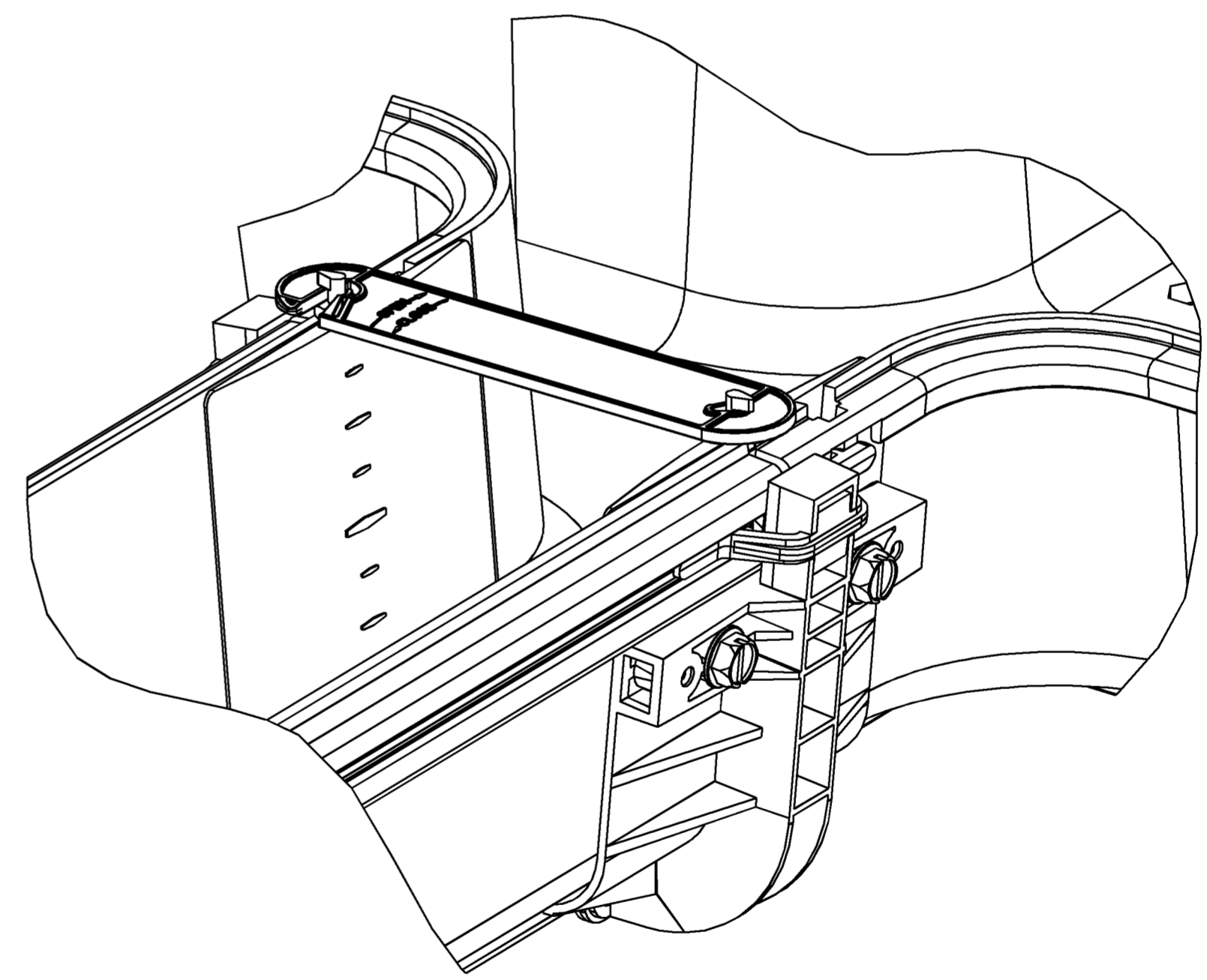


FIGURE 2
INITIAL TIGHTENING
TYP (6) PLACES



COMPLETED ASSEMBLY

INSTALLATION INSTRUCTIONS:

1. SLIDE BOTH FGS COMPONENTS INTO JUNCTION UNTIL FIRMLY SEATED AGAINST THE CENTER RIB. IF COMPONENT IS A MOLDED FITTING MAKE SURE LOCKING PINS ON SNAP CONNECTOR ARE ENGAGED IN HOLES ON MOLDED FITTING (SEE FIGURE 1).
2. TIGHTEN (6) SCREWS SUCH THAT THE WASHER HEAD ON SCREW IS APPROXIMATELY 1/16" FROM SUPPORT ARM (SEE FIGURE 2). AFTER ALL SCREWS HAVE BEEN TIGHTENED TO 1/16" DIMENSION GO BACK AND TIGHTEN SCREWS UNTIL THE WASHER HEAD BOTTOMS OUT ON THE SUPPORT ARM.

NOTES:

1. COVERED BY U.S. PATENT NO. 5,752,781. ISSUE DATE : MAY 19, 1998.

CATALOG NO.	COLOR
FGSB-JUNC-A	BLACK
FGS-JUNC-A	YELLOW
FGSO-JUNC-A	ORANGE



INFORMATION ON THIS DOCUMENT IS PROPRIETARY TO ADC AND SHALL NOT BE USED, COPIED, REPRODUCED OR DISCLOSED IN WHOLE OR IN PART WITHOUT WRITTEN CONSENT OF ADC.

TITLE
JUNCTION, SCREW, 4X4
INSTALLATION DWG

ALL DIMS AND TOLERANCES ARE INCHES UNLESS OTHERWISE SPECIFIED

DRAWING NUMBER
1011757

DO NOT SCALE DRAWING

ENGR: T. HAATAJA
DWN: T. HAATAJA

SHT. 1 OF 1

DIMENSIONS IN INCHES
THIRD ANGLE PROJECTION