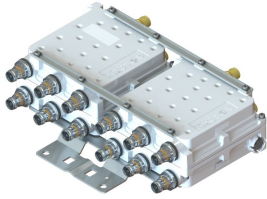


E14F07P01



Ultra Compact Quad Triplexer 1710-1880/1920-2170/2300-2690, with 4.3-10 connectors

- Ideal for small cell applications
- Compact form factor with reduced size and weight
- Suitable for space limited applications like Metro Cell, Lamp Pole, Concealment Solution and Macro Site
- New 4.3-10 connectors for improved PIM performance and size reduction
- Designed for network modernization application, introduction of LTE 4x4 MIMO
- Quad configuration, 4x4 MIMO ready
- dc/AISG blocking on all ports

Product Classification

Product Type Triplexer

General Specifications

Modularity 4-Quad

Dimensions

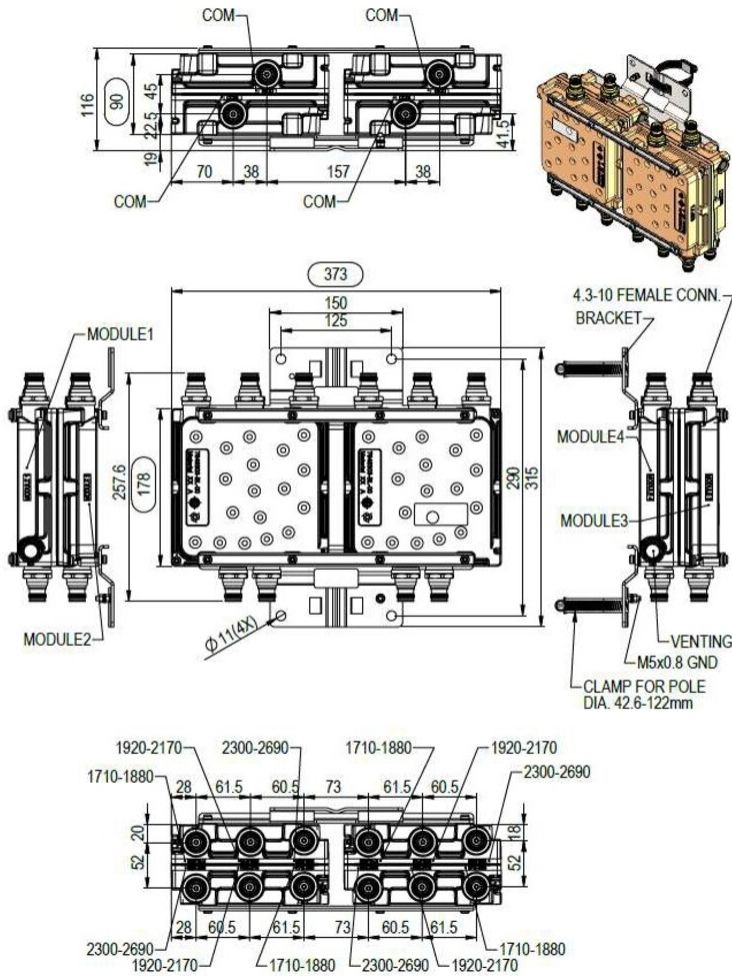
Height 90 mm | 3.543 in

Width 373 mm | 14.685 in

Depth 178 mm | 7.008 in

Dimension Drawing

E14F07P01



Electrical Specifications

License Band, Band Pass

DCS 1800 | IMT 2100 | IMT 2600 | TDD 2300 | TDD 2600

Electrical Specifications

Sub-module	1 2	1 2	1 2
Branch	1	2	3
Port Designation	1710-1880	1920-2170	2300-2690
License Band	DCS 1800, Band Pass	IMT 2100, Band Pass	TDD 2300, Band Pass TDD 2600, Band Pass IMT 2600, Band Pass

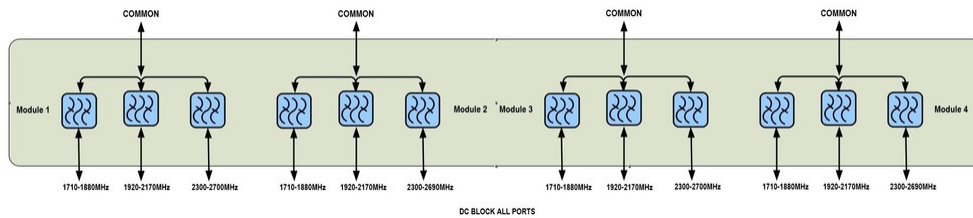
Electrical Specifications, Band Pass

Frequency Range, MHz	1710-1880	1920-2170	2300-2690
----------------------	-----------	-----------	-----------

E14F07P01

Insertion Loss, typical, dB	0.25	0.25	0.2
Return Loss, typical, dB	20	20	20
Isolation, typical, dB	38	52	52
Input Power, RMS, maximum, W	250	250	250
Input Power, PEP, maximum, W	1500	1500	1500
3rd Order PIM, typical, dBc	-155	-155	-155
3rd Order PIM Test Method	Two +43 dBm carriers	Two +43 dBm carriers	Two +43 dBm carriers

Block Diagram



Packaging and Weights

Volume	6 L
Weight, with mounting hardware	8.5 kg 18.739 lb
Weight, without mounting hardware	5.2 kg 11.464 lb

Regulatory Compliance/Certifications

Agency	Classification
ISO 9001:2015	Designed, manufactured and/or distributed under this quality management system

