



# Preferred ordering guide for NETCONNECT

New Zealand

EDITION 5

COMMSCOPE®

# Table of Contents

<b>Copper Solutions</b>	<b>5</b>
Category 6 <sub>A</sub> Shielded products	<b>5</b>
Category 6 <sub>A</sub> F/UTP Cable	5
Category 6 <sub>A</sub> Shielded Patch Panels	5
Category 6 <sub>A</sub> Shielded Patch Panel Extras	5
Category 6 <sub>A</sub> Shielded SLX/SL Series Jacks & KJX Style Jacks and Panel	6
Category 6 <sub>A</sub> Shielded SLX/SL Series Jack Coloured Nose caps	6
Category 6 <sub>A</sub> Shielded Standard Diameter Patch Cords	7
Category 6 <sub>A</sub> U/UTP products	<b>8</b>
Category 6 <sub>A</sub> U/UTP Cable	8
Category 6 <sub>A</sub> U/UTP Patch Panels	8
Category 6 <sub>A</sub> U/UTP Patch Panels Extras	8
Category 6 <sub>A</sub> U/UTP SL series Jacks	9
Category 6 <sub>A</sub> U/UTP Standard Diameter Patch Cords	10
Category 6 <sub>A</sub> U/UTP Small Diameter Patch Cords	11
Category 6 U/UTP products	<b>12</b>
Category 6 U/UTP Cable	12
Category 6 U/UTP SL Patch Panels	12
Category 6 U/UTP Patch Panels Extras	12
Category 6 U/UTP SL Series Jacks	13
Category 6 U/UTP Patch Cords	14
<b>Complementary Copper Solutions</b>	<b>15</b>
Copper Tools	15
Horizontal Cable Management	15
Consolidation Point	15
Surface Mount Outlets (SL/SLX Jacks Only)	16
Multimedia Panel and Accessories	16
CCA (Ceiling Connector Assembly)	17
Patch Cord Modular Plug Coloured Boot Clips	17
HighBand® Solutions	<b>18</b>
HighBand Frames and Cable Management	18
HighBand Patch Cords	18
DIN Rail Industrial Mounts	18

# Table of Contents

<b>Fibre Solutions</b>	<b>19</b>
<b>Fibre Optic Cables</b>	<b>19</b>
Fibre Optics Cables - Internal	19
Fibre Optics Cables - External	19
Mini Loose Tube	20
<b>Fibre Connectivity – Splice</b>	<b>21</b>
FMS Rackmount Fibre Trays - 19"	21
EPX Rackmount Fibre Trays - 19"	21
Agile Style Rackmount Fibre Trays	22
G2 Connectorised Adaptor Packs	23
G2 Splice Tray, Glands and Accessories	23
G2 Wall Mounted Enclosures	24
G2 Wall Mounted Enclosure Splice/Adaptor Cassettes	24
Fibre Optic Pigtails	25
<b>Fibre Connectivity - MPO*</b>	<b>26</b>
G2 & EPX Rackmount Fibre Trays - 19"	26
G2 MPO* Modules for Pre-terminated 12F MPO Cables	26
G2 MPO* Modules for Pre-terminated 24F MPO Cables	27
<b>Fibre Patch Cords</b>	<b>28</b>
Fibre Optic Patch Cords UPC	28
Fibre Optic Patch Cords APC	29
<b>Fibre MPO* Patch and Trunk Cables</b>	<b>30</b>
MPO* Patch Cable, 3.2mm OSD, LSZH, OM4, 12 Fibre - Straight	30
MPO* Trunk Cable, 6.4mm OSD, LSZH, OM4, 12 Fibre - Straight	31
MPO* Patch Cable, 3.8mm OSD, LSZH, OM4, 24 Fibre - Straight	32
MPO* Trunk Cable, 7.4mm OSD, LSZH, OM4, 24 Fibre - Straight	32
MPO* Patch Cable, 3.2mm OSD, LSZH, OS2, 12 Fibre - Straight	33
MPO* Trunk Cable, 6.4mm OSD, LSZH, OS2, 12 Fibre - Straight	34
<b>Fibre Accessories</b>	<b>35</b>
Fibre Panel Accessories	35
Fibre Splicing Accessories	35
<b>Power Fibre Cable Solutions</b>	<b>36</b>
POE Extender	36
Extender Accessories	36
Powered Fibre Cable	36
Headend Equipment	36

\*CommScope's MPO solution complies with IEC 61754-7 MPO Connector Family. MTP componentry may be used in the multi-fibre connector.

The CommScope NETCONNECT ordering guide for the New Zealand region contains commonly ordered copper and fibre structured cabling products. This information is subject to change. For a comprehensive, up-to-date listing of CommScope products, please go to [www.commscope.com](http://www.commscope.com)

# Copper Solutions

## Category 6A F/UTP Products



Cat 6A F/UTP - White



Cat 6A F/UTP - Green



Cat 6A F/UTP - External/ Underground

### Category 6A F/UTP Cable (internal)

MID Part Number	Description
884024508/10	Cat 6A F/UTP Cable, 23AWG, OD 7.2mm, LSZH, White - 305mtr Reel
1859218-1	Cat 6A F/UTP Cable, 23AWG, OD 7.2mm, LSZH, Black - 305mtr Reel
884034708/10	Cat 6A F/UTP Cable, 23AWG, OD 7.2mm, LSZH, Green - 305mtr Reel

Other colours available on request - Black, Green, Grey, Pink, Violet, Yellow

### Category 6A F/UTP Cable (external)

460158784	Cat 6A F/UTP Cable, 23AWG. OD 7.9mm. BLACK. Gel. PE Jacket (UV Resistant) – 305mtr Reel
-----------	---



Patch Panel Complete Kit



Recessed Angled Unloaded Panel

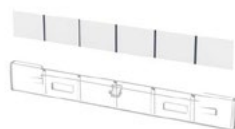


48 port 1RU Loaded Patch Panel

### Category 6A Shielded SL Patch Panels

All panels terminated using SL Series Tool (MID Part Number: 1725150-6).

MID Part Number	Description	Type	Ports	Design
760242563	Patch Panel Kit, Cat 6a STP 24 port patch panel FLUSH. Includes 24 SLX jacks and rear cable saddle	Kit	24	Flush
760242564	Patch Panel Kit, Cat 6a STP 24 port patch panel DEEP ANGLED. Includes 24 SLX jacks and rear cable saddle	Kit	24	Angled
760237046	24 port STP Patch Panel, 19" - 1RU DDM FLUSH mount. UNLOADED.	Unloaded	24	Flush
760237048	24 port STP Patch Panel, 19" - 1RU DDM ANGLED. DEEP ANGLED. UNLOADED.	Unloaded	24	Angled
760237050	24 port STP Patch Panel, 19" - 1RU DDM Recessed ANGLED. UNLOADED.	Unloaded	24	Recessed
760237066	48 port STP Patch Panel, 19" - 1RU DDM Cat6A SL	Loaded	48	Flush



Patch Panel Label Kit



Rear Cable Manager Saddle Kit



Patch Panel SLX Jack, Black

### Patch Panel Extras

All panels terminated using SL Series Tool (MID Part Number: 1725150-6).

MID Part Number	Description
760253471	Patch Panel Rear Saddle & Velcro Strap Kit
760244550	Universal Label Holder Kit for DDM Patch Panels. Packet of 4 labels for a 1 x DDM panel

Unloaded (DDM) panels use Shielded Cat 6A SL/SLX Jacks

2153449-2	Cat 6A RJ45 AMP-TWIST SLX Shielded Jack Black (MOQ = 24)
-----------	--

[Back to contents page](#)

# Copper Solutions

## Category 6A F/UTP Products



Cat 6<sub>A</sub> SLX Shielded Jack Alpine White



Cat 6<sub>A</sub> SLX Shielded Jack Black



SLX 4-Direction Cable Exit Cap

### Category 6<sub>A</sub> F/UTP Shielded SLX/SL Jacks

MID Part Number	Description
Terminated with SL Series Tool (MID Part Number: 1725150-6). Use CommScope SL/SLX Adaptor for Clipsal/HPM style face plates.	
1-2153449-3	Cat 6 <sub>A</sub> RJ45 AMP-TWIST SLX Shielded Jack Alpine White without Dustcover (MOQ = 24)
2153449-2	Cat 6 <sub>A</sub> RJ45 AMP-TWIST SLX Shielded Jack Black without Dustcover (MOQ = 24)
760245049	Cat 6 <sub>A</sub> Four-Direction Cable Exit Cap for SLX Jacks (Bag of 50)
Note: SLX Jack colour options available upon request (Almond, Blue, Black, Green, Grey, Orange, Red, White, Yellow)	



Coloured Nose Caps for SLX Jacks

### Coloured Nose Caps to suit SLX Series Jacks

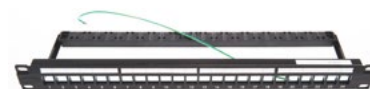
MID Part Number	Description
2848025-5	COLOUR CAP, SLX Orange (Bag of 50)
2848025-6	COLOUR CAP, SLX Blue (Bag of 50)
2848025-7	COLOUR CAP, SLX Red (Bag of 50)
2848025-8	COLOUR CAP, SLX Yellow (Bag of 50)
2848025-9	COLOUR CAP, SLX Green (Bag of 50)



Cat 6<sub>A</sub> KJX Shielded Jack



Cat 6<sub>A</sub> KJX Shielded Side Entry Jack



KJX 24-Port Flush Patch Panel

### Category 6<sub>A</sub> KJX Shielded Products

MID Part Number	Description
760253419	Cat 6 <sub>A</sub> KJX 500Mhz Shielded Keystone RJ45 Jack. (Pack of 12)
760254922	Cat 6 <sub>A</sub> KJ-Series Modular Jack, RJ45, Shielded Side Entry, Silver. (Pack of 12)
760253420	KJX 24-Port Shielded Patch Panel with rear cable manager (unloaded)

[Back to contents page](#)

# Copper Solutions

## Category 6A F/UTP Products



Cat 6A Shielded Patch Cord

Category 6A S/FTP Patch Cords (LSZH)	
MID Part Number	Description
Patch cords have outside diameter of 5.9mm. Other colours and lengths available	
NPC6ASZDB-BL020C	Cat 6A S/FTP, RJ45, Patch Cord, LSZH, Blue - 0.2 mtr
NPC6ASZDB-BL050C	Cat 6A S/FTP, RJ45, Patch Cord, LSZH, Blue - 0.5 mtr
NPC6ASZDB-BL001M	Cat 6A S/FTP, RJ45, Patch Cord, LSZH, Blue - 1 mtr
NPC6ASZDB-BL150C	Cat 6A S/FTP, RJ45, Patch Cord, LSZH, Blue - 1.5 mtr
NPC6ASZDB-BL002M	Cat 6A S/FTP, RJ45, Patch Cord, LSZH, Blue - 2 mtr
NPC6ASZDB-BL003M	Cat 6A S/FTP, RJ45, Patch Cord, LSZH, Blue - 3 mtr
NPC6ASZDB-BL005M	Cat 6A S/FTP, RJ45, Patch Cord, LSZH, Blue - 5 mtr
NPC6ASZDB-BL010M	Cat 6A S/FTP, RJ45, Patch Cord, LSZH, Blue - 10 mtr
NPC6ASZDB-WT020C	Cat 6A S/FTP, RJ45, Patch Cord, LSZH, White - 0.2 mtr
NPC6ASZDB-WT050C	Cat 6A S/FTP, RJ45, Patch Cord, LSZH, White - 0.5 mtr
NPC6ASZDB-WT001M	Cat 6A S/FTP, RJ45, Patch Cord, LSZH, White - 1 mtr
NPC6ASZDB-WT150C	Cat 6A S/FTP, RJ45, Patch Cord, LSZH, White - 1.5 mtr
NPC6ASZDB-WT002M	Cat 6A S/FTP, RJ45, Patch Cord, LSZH, White - 2 mtr
NPC6ASZDB-WT003M	Cat 6A S/FTP, RJ45, Patch Cord, LSZH, White - 3 mtr
NPC6ASZDB-WT005M	Cat 6A S/FTP, RJ45, Patch Cord, LSZH, White - 5 mtr
NPC6ASZDB-WT010M	Cat 6A S/FTP, RJ45, Patch Cord, LSZH, White - 10 mtr
For other colours, ie: NPC6ASZDB-XX, where XX use: BK=Black, GR=Green, GY=Grey, OR=Orange, RD=Red, VL=Violet, YL=Yellow	

# Copper Solutions

## Category 6A U/UTP Products



Cat 6<sub>A</sub> U/UTP Cable

Category 6 <sub>A</sub> U/UTP Cable	
MID Part Number	Description
884041004/10	Cat 6 <sub>A</sub> Cable 4 Pair UTP Solid LSZH. 305mtr Reel - BLUE 6.9mm OD, 24AWG



Patch Panel Complete Kit



Recessed Angled Unloaded Panel



Patch Panel Complete Kit

Category 6 <sub>A</sub> U/UTP SL Patch Panels				
All panels terminated using SL Series Tool (MID Part Number: 1725150-6).				
MID Part Number	Description	Type	Ports	Design
760242560	Patch panel kit, Cat 6a UTP 24 port panel, FLUSH. Includes 24 SL jacks and rear cable saddles	Kit	24	Flush
760242561	Patch panel kit, Cat 6a UTP 24 port panel, DEEP ANGLED. Includes 24 SL jacks and rear cable saddles	Kit	24	Angled
760237040	24 port UTP Patch Panel, 1RU DDM FLUSH - Unloaded	Unloaded	24	Flush
760237042	24 port UTP Patch Panel, 1RU DDM DEEP ANGLED - Unloaded	Unloaded	24	Angled
760237044	24 port UTP Patch Panel, 1RU DDM RECESSED ANGLED - Unloaded	Unloaded	24	Recessed



Patch Panel Label Kit



Rear Cable Manager Saddle Kit



Patch Panel SLX Jack, Black

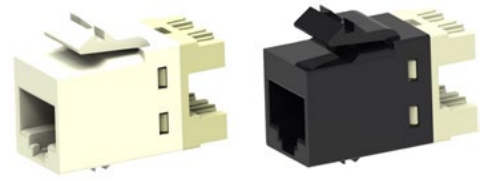
Patch Panel Extras	
Rear Saddle Cable management kit required for all unloaded panels	
MID Part Number	Description
760253471	Patch Panel Rear Saddle & Velcro Strap Kit
760244550	Universal Label Holder Kit for DDM Patch Panels. Packet of 4 labels for a 1 x DDM panel
Unloaded (DDM) panels use Cat 6 <sub>A</sub> SL UTP Jacks	
760241195	Cat 6 <sub>A</sub> RJ45 AMP-TWIST SL UTP Jack Black (MOQ = 24)

[Back to contents page](#)



# Copper Solutions

## Category 6A U/UTP Products



Cat 6A SL110G without Bezel

Category 6A U/UTP SL Series Jacks	
MID Part Number	Description
760241194	Cat 6A SL10G SL110 UTP jack - ALPINE WHITE
760241195	Cat 6A SL10G SL110 UTP jack - BLACK
Note: Cat 6A SL110G Jack colour options available upon request (Almond, Blue, Black, Green, Grey, Orange, Red, Violet, White, Yellow)	

# Copper Solutions

## Category 6A U/UTP Products



Cat 6A U/UTP Patch Cord

Category 6A U/UTP Patch Cords (LSZH)	
MID Part Number	Description
Patch cords have outside diameter of 7.2mm	
NPC6AUZDB-BL001M	Cat 6 <sub>A</sub> RJ45 Unshielded Patch Cord (LSZH) Blue (1.0M)
NPC6AUZDB-BL150C	Cat 6 <sub>A</sub> RJ45 Unshielded Patch Cord (LSZH) Blue (1.5M)
NPC6AUZDB-BL002M	Cat 6 <sub>A</sub> RJ45 Unshielded Patch Cord (LSZH) Blue (2.0M)
NPC6AUZDB-BL003M	Cat 6 <sub>A</sub> RJ45 Unshielded Patch Cord (LSZH) Blue (3.0M)
NPC6AUZDB-BL005M	Cat 6 <sub>A</sub> RJ45 Unshielded Patch Cord (LSZH) Blue (5.0M)
NPC6AUZDB-BL010M	Cat 6 <sub>A</sub> RJ45 Unshielded Patch Cord (LSZH) Blue (10M)
NPC6AUZDB-BL015M	Cat 6 <sub>A</sub> RJ45 Unshielded Patch Cord (LSZH) Blue (15M)
NPC6AUZDB-BL020M	Cat 6 <sub>A</sub> RJ45 Unshielded Patch Cord (LSZH) Blue (20M)
NPC6AUZDB-WT001M	Cat 6 <sub>A</sub> RJ45 Unshielded Patch Cord (LSZH) White (1.0M)
NPC6AUZDB-WT150C	Cat 6 <sub>A</sub> RJ45 Unshielded Patch Cord (LSZH) White (1.5M)
NPC6AUZDB-WT002M	Cat 6 <sub>A</sub> RJ45 Unshielded Patch Cord (LSZH) White (2.0M)
NPC6AUZDB-WT003M	Cat 6 <sub>A</sub> RJ45 Unshielded Patch Cord (LSZH) White (3.0M)
NPC6AUZDB-WT005M	Cat 6 <sub>A</sub> RJ45 Unshielded Patch Cord (LSZH) White (5.0M)
NPC6AUZDB-WT010M	Cat 6 <sub>A</sub> RJ45 Unshielded Patch Cord (LSZH) White (10M)
NPC6AUZDB-WT015M	Cat 6 <sub>A</sub> RJ45 Unshielded Patch Cord (LSZH) White (15M)
NPC6AUZDB-WT020M	Cat 6 <sub>A</sub> RJ45 Unshielded Patch Cord (LSZH) White (20M)
For other colours, ie: NPC6AUZDB-XX, where XX use: BK=Black, GR=Green, GY=Grey, OR=Orange, RD=Red, YL=Yellow	

# Copper Solutions

## Category 6A U/UTP Products



Cat 6A U/UTP Mini Patch Cord

Category 6A UTP SLIM Patch Cords (LSZH) 28AWG 4.95mm	
MID Part Number	Description
Patch cords have outside diameter of 4.95mm	
CO199K2-0ZM001	Cat 6A RJ45 Unshielded Small Diameter MiNo6A Patch Cord (LSZH) Blue (1m)
CO199K2-0ZM002	Cat 6A RJ45 Unshielded Small Diameter MiNo6A Patch Cord (LSZH) Blue (2m)
CO199K2-0ZM003	Cat 6A RJ45 Unshielded Small Diameter MiNo6A Patch Cord (LSZH) Blue (3m)
CO199K2-0ZM004	Cat 6A RJ45 Unshielded Small Diameter MiNo6A Patch Cord (LSZH) Blue (4m)
CO199K2-0ZM007	Cat 6A RJ45 Unshielded Small Diameter MiNo6A Patch Cord (LSZH) Blue (7m)
CO199K2-0ZM010	Cat 6A RJ45 Unshielded Small Diameter MiNo6A Patch Cord (LSZH) Blue (10m)
CO199K2-0ZM015	Cat 6A RJ45 Unshielded Small Diameter MiNo6A Patch Cord (LSZH) Blue (15m)
CO199K2-08M001	Cat 6A RJ45 Unshielded Small Diameter MiNo6A Patch Cord (LSZH) White (1m)
CO199K2-08M002	Cat 6A RJ45 Unshielded Small Diameter MiNo6A Patch Cord (LSZH) White (2m)
CO199K2-08M003	Cat 6A RJ45 Unshielded Small Diameter MiNo6A Patch Cord (LSZH) White (3m)
CO199K2-08M004	Cat 6A RJ45 Unshielded Small Diameter MiNo6A Patch Cord (LSZH) White (4m)
CO199K2-08M007	Cat 6A RJ45 Unshielded Small Diameter MiNo6A Patch Cord (LSZH) White (7m)
CO199K2-08M010	Cat 6A RJ45 Unshielded Small Diameter MiNo6A Patch Cord (LSZH) White (10m)
CO199K2-08M015	Cat 6A RJ45 Unshielded Small Diameter MiNo6A Patch Cord (LSZH) White (15m)
Other colours available (CO199K2-01=Black, 03=Grey, 04=Spring Green, 07=Red, 09=Yellow, 0L=Violet)	
Perfect for cross connects, workstations or racks with higher-density and/or limited space. Small diameter unshielded twisted pair patch cords (4.95 mm) that offers flexibility, durability and reliability. Colours available (Black, Blue, Green, Grey, Orange, Red, Spring Green, Violet, White, Yellow)	

# Copper Solutions

## Category 6 U/UTP Products



Cat 6 U/UTP Reel in a Box



Cat 6 U/UTP REELSPEED

Category 6 U/UTP Cable	
MID Part Number	Description
REELSPEED Cable Reel - Interlocking Exo-skeleton	
64991030-01A	Cat.6 U/UTP Cable, 23AWG, OD 6.4mm, GREY. REELSPEED. 305mtr
64991030-03A	Cat.6 U/UTP Cable, 23AWG, OD 6.4mm, BLUE. REELSPEED. 305mtr
Standard Cable Reel-in-a-box	
64991030-03AB	Cat.6 U/UTP Cable, 23AWG, OD 6.4mm, BLUE. Reel in a box. 305mtr
76000888	Cat.6 U/UTP Cable, 24AWG, OD 7.9mm, Black. Gel Flooded. PEJacket (UV Resistant). Reel 305mtr



Patch Panel Complete Kit

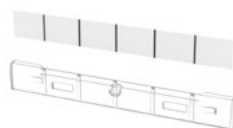


Recessed Angled Unloaded Panel



Flush Mount

Category 6 U/UTP SL Patch Panels				
All panels terminated using SL Series Tool (MID Part Number: 1725150-6).				
MID Part Number	Description	Type	Ports	Design
760242562	24 port Patch Panel Kit, Cat 6 UTP 24 port FLUSH. Includes 24 x SL jacks and rear cable saddles	Kit	24	Flush
760237040	24 port UTP Patch Panel, 1RU DDM FLUSH - Unloaded	Unloaded	24	Flush
760237042	24 port UTP Patch Panel, 1RU DDM DEEP ANGLED - Unloaded	Unloaded	24	Angled
760237044	24 port UTP Patch Panel, 1RU DDM RECESSED ANGLED - Unloaded	Unloaded	24	Recessed



Patch Panel Label Kit



Rear Cable Manager Saddle Kit



Patch Panel SLX Jack, Black

Patch Panel Extras	
Rear Saddle Cable management kit required for all unloaded panels	
MID Part Number	Description
760253471	Patch Panel Rear Saddle & Velcro Strap Kit
760244550	Universal Label Holder Kit for DDM Patch Panels. Packet of 4 labels for a 1 x DDM panel
Unloaded (DDM) panels use Cat 6 <sub>A</sub> SL UTP Jacks	
9-1375055-2	Cat 6 UTP RJ45 SL Jack, T568A or T568B - Black (MOQ = 24)

[Back to contents page](#)

# Copper Solutions

## Category 6 U/UTP Products



Cat 6 SL UTP Jack

Category 6 U/UTP SL Series Jacks	
MID Part Number	Description
Terminated with SL Series Tool (MID Part Number: 1725150-6).	
1-1375055-3	Cat.6 UTP RJ45 SL Jack, T568A or T568B - WHITE
1375055-2	Cat.6 UTP RJ45 SL Jack, T568A or T568B - BLACK
1375055-4	Cat.6 UTP RJ45 SL Jack, T568A or T568B - GREY
1375055-5	Cat.6 UTP RJ45 SL Jack, T568A or T568B - ORANGE
1375055-6	Cat.6 UTP RJ45 SL Jack, T568A or T568B - BLUE
1375055-7	Cat.6 UTP RJ45 SL Jack, T568A or T568B - RED
1375055-8	Cat.6 UTP RJ45 SL Jack, T568A or T568B - YELLOW
1375055-9	Cat.6 UTP RJ45 SL Jack, T568A or T568B - GREEN
1-1375055-0	Cat.6 UTP RJ45 SL Jack, T568A or T568B - VIOLET

# Copper Solutions

## Category 6 U/UTP Products



Cat 6 U/UTP Patch Cord

Category 6 U/UTP Patch Cords 24AWG 5.97mm	
MID Part Number	Description
Patch cords have outside diameter of 5.97mm. Other colours and lengths available. Individually packaged, MOQ 25.	
NPC06UVDB-BL003F	Cat6 RJ45 Patch Cord, Unshielded, CM (PVC), Blue, 3FT (0.9M)
NPC06UVDB-BL005F	Cat6 RJ45 Patch Cord, Unshielded, CM (PVC), Blue, 5FT (1.5M)
NPC06UVDB-BL007F	Cat6 RJ45 Patch Cord, Unshielded, CM (PVC), Blue, 7FT (2.1M)
NPC06UVDB-BL010F	Cat6 RJ45 Patch Cord, Unshielded, CM (PVC), Blue, 10FT (3.0M)
NPC06UVDB-BL016F	Cat6 RJ45 Patch Cord, Unshielded, CM (PVC), Blue, 16FT (4.8M)
NPC06UVDB-BL033F	Cat6 RJ45 Patch Cord, Unshielded, CM (PVC), Blue, 33FT (10.0M)
NPC06UVDB-WT003F	Cat6 RJ45 Patch Cord, Unshielded, CM (PVC), White, 3FT (0.9M)
NPC06UVDB-WT005F	Cat6 RJ45 Patch Cord, Unshielded, CM (PVC), White, 5FT (1.5M)
NPC06UVDB-WT007F	Cat6 RJ45 Patch Cord, Unshielded, CM (PVC), White, 7FT (2.1M)
NPC06UVDB-WT010F	Cat6 RJ45 Patch Cord, Unshielded, CM (PVC), White, 10FT (3.0M)
NPC06UVDB-WT016F	Cat6 RJ45 Patch Cord, Unshielded, CM (PVC), White, 16FT (4.8M)
NPC06UVDB-WT033F	Cat6 RJ45 Patch Cord, Unshielded, CM (PVC), White, 33FT (10.0M)
For other colours, ie: NPC06UVDB-XX, where XX use: BK=Black, GR=Green, GY=Grey, OR=Orange, RD=Red, YL=Yellow	

# Complementary Copper Solutions



SL Series Termination Tool



KRONE Connection Tool with Sensor

Copper Tools	
MID Part Number	Description
1725150-6	SL Series Termination Tool - Includes Lacing Fixture
1673956-6	Lacing Fixture replacement for SL Series Termination Tool
64172055-11	KRONE Connection Tool with Sensor - use on all KRONE style modules (Not suitable for SL Jacks)



IRU Cable Manager Panel with Cover



IRU 4 Ring Metal Patch Cord Minder



IRU Cable Manager Metal Finger Duct

Horizontal Cable Management	
MID Part Number	Description
<b>Loop style</b>	
760038240	1RU 4 Ring Metal Patch Cord Minder - Black - 80mm Loops. Includes cage nuts
760038257	2RU 4 Ring Metal Patch Cord Minder - Black - 80mm Loops. Includes cage nuts
<b>Finger duct style, with cover</b>	
1375162-1	1RU Cable Manager Panel with Cover
760072942	1RU Cable Manager Metal Finger Duct 75mm
760072959	2RU Cable Manager Metal Finger Duct 75mm



12 Port Consolidation Point for SL Jacks

Consolidation Point	
MID Part Number	Description
2-1671163-1	CP 12 port SL patch panel + Cover unloaded black

[Back to contents page](#)

# Complementary Copper Solutions

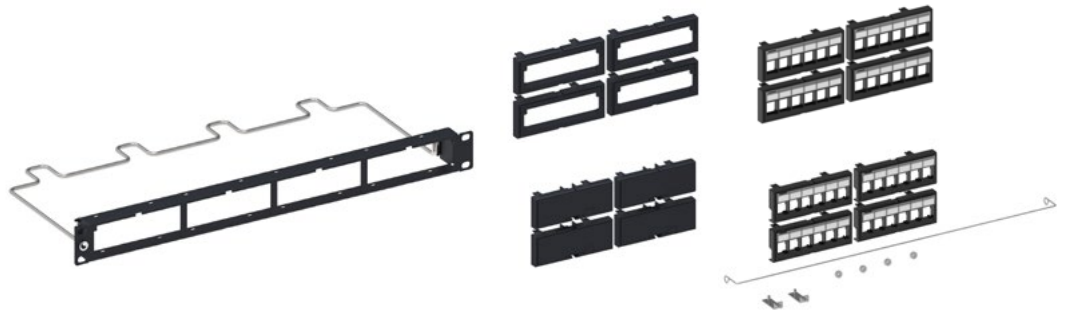


1 and 2 Port Surface Mount Modules



4 to 6 Port Surface Mount Modules

Surface Mount Outlets (SL/SLX Jacks Only)	
MID Part Number	Description
760248523	Surface Mount Module, 1-port, unloaded, White – (supports SL, SLX footprint Jacks as well as KJ style with Adaptor)
760248527	Surface Mount Module, 2-port, unloaded, White – Reduced Footprint (supports SL, SLX footprint Jacks as well as KJ style with Adaptor)
1933671-2	Surface Mount Module, 4-port, unloaded, Black – suit SL Jacks
1-1933671-3	Surface Mount Module, 4-port, unloaded, White – suit SL Jacks
1933674-2	Surface Mount Module, 6-port, unloaded, Black – suit SL Jacks
1-1933674-3	Surface Mount Module, 6-port, unloaded, White – suit SL Jacks



Multimedia Panel and Accessories	
Accepts Copper and Fibre inserts for SL Jacks and G2 Fibre Modules or Cassettes	
MID Part Number	Description
760238657	Patch Panel, Empty, 1RU, Accepts 4 Copper or Fibre Modules, Includes rear cable bar
760238659	Module Adapter (4 pcs) for G2 Fiber Modules or Cassettes, Black
760238660	Module for 6 unshielded SL Jacks (4 pcs), Black
760238661	Module for 6 shielded SL Jacks (4 pcs), Black
760238658	Blank Module (4 pcs), Black
760175919	Patch Panel Rear Fibre Cable Management Kit
760229179	Patch Panel Rear Copper Saddle & Velcro Strap Kit

[Back to contents page](#)



# Complementary Copper Solutions



CCA UTP Connector Only



CCA Connector with Cat 6/ Cat 6<sub>A</sub> cable assembly



CCA Shielded Connector Only

<b>Ceiling Connector Assembly (CCA) UTP</b>	
Field Terminated Plug Connector for Modified Permanent Link. CCA should be wired to T568B method to match patch cord.	
MID Part Number	Description
760234921	CCA UTP Connector Only (No Patch Cable). Use with Cat 5e/6/6 <sub>A</sub> UTP Patch Cords Cut in Half
<b>Ceiling Connector Assembly (CCA) Shielded</b>	
760250028	CCA Shielded Connector Only (No Patch Cable) Cat6 <sub>A</sub> (5 pack)
The shielded ceiling connector assembly is a field terminated solution that does not require special tools to terminate and can be easily attached to a horizontal cable using a cut-off tool and pliers. Quick and reliable terminations are key to the product's features that simplify installations in the ceiling.	



Modular Plug Coloured Clips

<b>Patch Cord Modular Plug Coloured Boot Clips</b>	
Differentiate networks using coloured clips on patch cord plugs. (Note: For patch cords with modular plug)	
MID Part Number	Description
2843022-1	Modular Plug Colour Clip - Almond (Bag 50)
2843022-2	Modular Plug Colour Clip - Black (Bag 50)
2843022-3	Modular Plug Colour Clip - White (Bag 50)
2843022-4	Modular Plug Colour Clip - Grey (Bag 50)
2843022-5	Modular Plug Colour Clip - Orange (Bag 50)
2843022-6	Modular Plug Colour Clip - Blue (Bag 50)
2843022-7	Modular Plug Colour Clip - Red (Bag 50)
2843022-8	Modular Plug Colour Clip - Yellow (Bag 50)
2843022-9	Modular Plug Colour Clip - Green (Bag 50)

# Complementary Copper Solutions



64501107-01



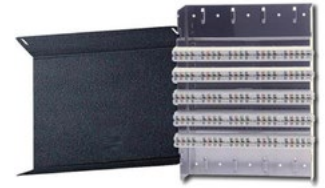
64501103-10



64502157-10



64502157-20



64501105-21

## HighBand Frame and Cable Management (for NETCONNECT UTP)

MID Part Number	Description
<a href="#">Terminate Using KRONE Connection Tool (64172055-01)</a>	
64501107-01	HIGHBAND Frame Kit, Cat 6 <sub>A</sub> 12way, 240 pairs
64501103-10	HIGHBAND Frame Cable Management Kit
64502157-10	HIGHBAND Frame Cable Trough, TOP
64502157-20	HIGHBAND Frame Cable Trough, BOTTOM
<b>HighBand Consolidation Point (for NETCONNECT UTP)</b>	
64501105-21	HIGHBAND Consolidation Point, Cat 6 <sub>A</sub> 100 pair

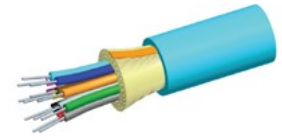


## DIN Rail Industrial Mounts

MID Part Number	Description
1711658-2	OM4 50/125µm, Gel-filled Loose Tube Cable, OD 6.4mm, ULSZH, 6 core fibre
1711897-1	OM4 50/125µm, Gel-filled Loose Tube Cable, OD 6.4mm, ULSZH, 12 core fibre

# Fibre Solutions

## Fibre Optic Cables



Fibre Optic Cables - Indoor Distribution	
MID Part Number	Description
<b>OM4 50/125um (3500/500 MHz.km) Internal Distribution Cable</b>	
760012153	OM4 50/125µm, Internal Riser Distribution Cable, OD 6mm, ULSZH, 6 core fibre
760012161	OM4 50/125µm, Internal Riser Distribution Cable, OD 7.5mm, ULSZH, 12 core fibre
760019117	OM4 50/125µm, Internal Riser Distribution Cable, OD 9.5mm, ULSZH, 24 core fibre
<b>OS2 9/125um Internal Distribution Cable</b>	
760004242	OS2 9/125µm, Internal Riser Distribution Cable, OD 6mm, ULSZH, 6 core fibre
760004267	OS2 9/125µm, Internal Riser Distribution Cable, OD 7.5mm, ULSZH, 12 core fibre
760019075	OS2 9/125µm, Internal Riser Distribution Cable, OD 9.5mm, ULSZH, 24 core fibre

Other cables available on request



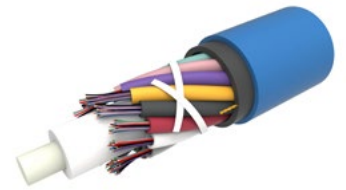
Fibre Optic Cables - Outdoor/Underground	
Designed for external underground installations in (micro) ducts by pulling, blowing or floating techniques. Polyamide provides anti-termite protection. Optimised for blowing in mini ducts of 10mm diameter (internal).	
MID Part Number	Description
<b>OM4 50/125um (3500/500 MHz.km) Gel-filled Loose Tube</b>	
2-599161-2	OM4 50/125µm, Gel-filled Loose Tube Cable, OD 6.4mm, ULSZH, 6 core fibre
2-599164-2	OM4 50/125µm, Gel-filled Loose Tube Cable, OD 6.4mm, ULSZH, 12 core fibre
2-599167-2	OM4 50/125µm, Gel-filled Loose Tube Cable, OD 7.5mm, ULSZH, 24 core fibre
<b>OS2 9/125um Gel-filled Loose Tube</b>	
2-599161-4	OS2 9/125µm, Gel-filled Loose Tube Cable, OD 6.4mm, ULSZH, 6 core fibre
2-599164-4	OS2 9/125µm, Gel-filled Loose Tube Cable, OD 6.4mm, ULSZH, 12 core fibre
760241043	OS2 9/125µm, Gel-filled Loose Tube Cable, OD 7.5mm, ULSZH, 24 core fibre
64623447-48MLT	48 Core SM CSM External Mini Loose Tube OD 6.3mm

Other cables available on request

[Back to contents page](#)

# Fibre Solutions

## Mini Loose Tubes



Mini Loose Tubes	
MID Part Number	Description
<b>OM4 Nylon Jacket Mini Loose Tube (MLT) - Slim outside diameter</b>	
64624474-06MLT	06 Core OM4 50/125um, External Mini Loose Tube OD 6.3mm
64624474-12MLT	12 Core OM4 50/125um, External Mini Loose Tube OD 6.3mm
64624474-24MLT	24 Core OM4 50/125um, External Mini Loose Tube OD 7.5mm
<b>OS2 Nylon Jacket Mini Loose Tube (MLT). 12 fibre subtubes - Slim outside diameter</b>	
64623447-12MLT	12 Core SM CSM External Mini Loose Tube OD 6.3mm
64623447-24MLT	24 Core SM CSM External Mini Loose Tube OD 6.3mm
64623447-48MLT	48 Core SM CSM External Mini Loose Tube OD 6.3mm
64623447-72MLT	72 Core SM CSM External Mini Loose Tube OD 6.3mm
64623447-96MLT	96 Core SM CSM External Mini Loose Tube OD 7.4mm
64623447-144MLT	144 Core SM CSM External Mini Loose Tube OD 8.4mm

[Other cables available on request](#)

[Back to contents page](#)

# Fibre Solutions

## Fibre Connectivity - Splice



1RU FMS Tray OM4 – (up to 48f in LC)



1RU FMS Tray OS2 – (up to 48f in LC)



### FMS Solution - Rackmount Fibre Trays - 19" (Fully Loaded)

#### OM4 Fully Loaded Sliding Fibre Tray - (includes adaptors, coloured pigtails, Splice tray, sleeves & cable glands)

MID Part Number	Description	Mode	Ports	Adapt
760254441	1RU FMS Tray, 12 port OM4 LC (6 x LC Duplex)	OM4	12	LC
760254442	1RU FMS Tray, 24 port OM4 LC (12 x LC Duplex)	OM4	24	LC
760254443	1RU FMS Tray, 48 port OM4 LC (24 x LC Duplex)	OM4	48	LC
760254439	1RU FMS Tray, 12 port OM4 SC (6 x SC Duplex)	OM4	12	SC
760254440	1RU FMS Tray, 24 port OM4 SC (12 x SC Duplex)	OM4	24	SC

#### OS2 Fully Loaded Sliding Fibre Tray

MID Part Number	Description	Mode	Ports	Adapt
760254436	1RU FMS Tray, 12 port OS2 LC (6 x LC Duplex)	OS2	12	LC
760254437	1RU FMS Tray, 24 port OS2 LC (12 x LC Duplex)	OS2	24	LC
760254438	1RU FMS Tray, 48 port OS2 LC (24 x LC Duplex)	OS2	48	LC
760254122	1RU FMS Tray, 12 port OS2 SC (6 x SC Duplex)	OS2	12	SC
760254435	1RU FMS Tray, 24 port OS2 SC (12 x SC Duplex)	OS2	24	SC



760249998



760251044



760251048

### EPX Solution - Rackmount Fibre Trays - 19" (Configurable)

#### Fixed and Sliding Drawers

MID Part Number	Description
These enclosures are best suited for splice solutions. These enclosures are best suited for splice solutions, and fibre cable entering from the side of the tray. 1 ans 2RP EPX trays are designed for side cable entry	
760249998	1U Sliding Drawer Panel, accepts (4) G2 modules or adapter packs, up to 48 DPX LC or 32 MPO ports
760251044	1U Sliding Drawer Panel, accepts (4) G2 modules or adapter packs, up to 96 DPX LC or 64 MPO ports
760251048*	1U Sliding Enclosed Panel, accepts (4) G2 modules or adapter packs, up to 192 DPX LC or 128 MPO ports

\*Recommended FOBOT for Ministry of Education projects (760249998)

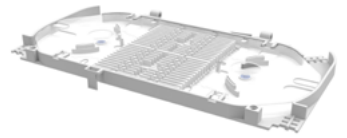
[Back to contents page](#)

# Fibre Solutions

## Agile Fibre Panel



760242476



760241378

### G2 Accessories

Agile splice panel uses G2 style splice cassettes, G2 modular adaptors or G2 MPO cassettes

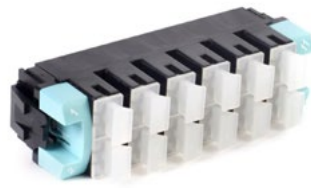
MID Part Number	Description
760242476	Agile 1RU enclosed sliding panel, accepts 4 x G2 modules or adapter packs. No splice tray or cable glands included (MoE approved)
760241378	48F splice tray kit for Agile 1RU tray. Includes 48 splice protectors - 2 splice trays max (96 fibres) per 1RU panel

# Fibre Solutions

## Fibre Connectivity - Splice



SC Singlemode



SC OM4



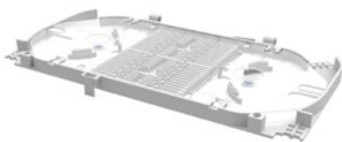
LC Singlemode



LC OM4

### G2 Connectorised Adaptor Packs suitable for Agile, EPX and HD trays

MID Part Number	Description
<b>Singlemode</b>	
760135087	G2 Singlemode Distribution Adapter Pack 12F SC Blue
760230946	G2 Singlemode Distribution Adapter Pack 12F LC Blue
760216762	G2 Singlemode Distribution Adapter Pack 24F LC Blue
760135095	G2 Singlemode Distribution Adapter Pack 12F SC APC Green
760230961	G2 Singlemode Distribution Adapter Pack 12F LC APC Green
760216770	G2 Singlemode Distribution Adapter Pack 24F LC APC Green
<b>Multimode</b>	
760134551	G2 Multimode Distribution Adapter Pack 12F SC Aqua
760230938	G2 Multimode Distribution Adapter Pack 12F LC OM4 Aqua
760216754	G2 Multimode Distribution Adapter Pack 24F LC OM4 Aqua
760109462	G2 Mod Panel Blank Adapter Pack, 4 Panels



G2 Splice Tray



Patch Cable Gland Kit



Trunk Cable Gland Kit



Quick-Fit to G2 Adaptor



Splice Protector

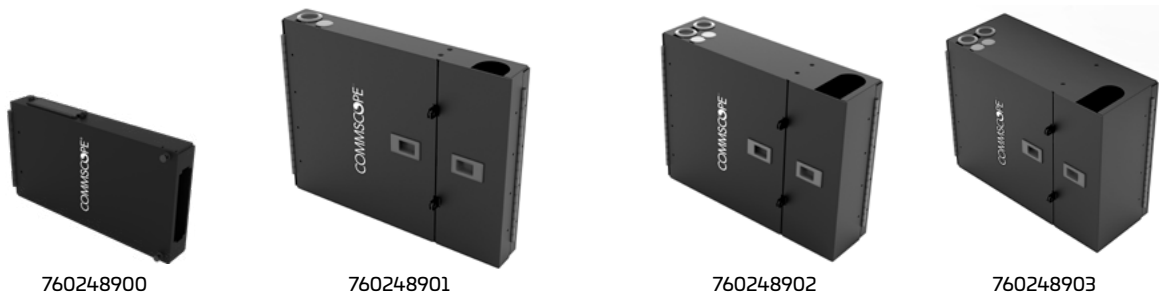
### G2 Accessories

MID Part Number	Description
760241378	Fiber Optic Splice Tray Kit, stackable, 48-fiber capacity (splice protectors included)
760109462	G2 Mod Panel Blank Adapter Pack, 4 Panels, fits Agile, EPX and HD trays
760242678	Patch cord fitting kit with 12 cable glands
760242679	Trunk cable fitting kit with 12 cable glands
760242369	UCP/Quick-Fit to G2 Adapter Bracket Kit (kit of 4)
103897-000	Splice Protector, 45mm SMOUV (Bag of 100)
369305-000	Splice Protector, 62mm SMOUV (Bag of 100)

[Back to contents page](#)

# Fibre Solutions

## Fibre Connectivity - Splice



760248900

760248901

760248902

760248903

### G2 Solution – Wall Mount Fibre Enclosures

Accept G2 style 12 and 24F adaptor packs

MID Part Number	Description
-----------------	-------------

These enclosures are best suited for splice solutions

760248900	Wall Mount Enclosure, accepts one G2 LC splice cassette 12/24F
760248901	Wall Mount Enclosure, accepts two G2 LC splice cassettes 24/48F
760248902	Wall Mount Enclosure, accepts four G2 LC splice cassettes 48/96F
760248903	Wall Mount Enclosure, accepts eight G2 LC splice cassettes 96/192F



760245399

760244929

### G2 Solution – Wall Mount Adaptor/Splice Cassette

Internal Shutter with Pigtails. Fits Agile, EPX and HD style trays

MID Part Number	Description
-----------------	-------------

#### OM4 LC

760244927	G2 Splice Cassette, 24LC with internal shutters, OM4, with pigtails
760245399	G2 Splice Cassette, 12LC with internal shutters, OM4, with pigtails

#### OS2 LC

760244929	G2 Splice Cassette, 24LC/UPC with internal shutters, OS2, with pigtails
760245401	G2 Splice Cassette, 12LC/UPC with internal shutters, OS2, with pigtails

#### OS2 LCA/SCA

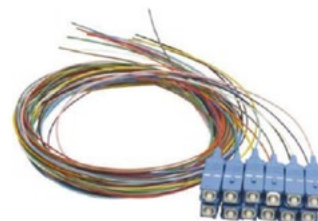
760245960	G2 Splice Cassette, 12 LC/APC, OS2, with pigtails
760245961	G2 Splice Cassette, 24 LC/APC, OS2, with pigtails
760245962	G2 Splice Cassette, 12 SC/APC, OS2, with pigtails

[Back to contents page](#)



# Fibre Solutions

## Fibre Connectivity - Splice Solutions



Pigtail 1.5 metre Pack of 12

Fibre Optic Pigtails	
MID Part Number	Description
<b>OM4 Pigtails, 50/125µm, 1 Fibre, 900um, 1.5mtr, LSZH Tight Buffered Fibre</b>	
FAXLCUCOA-XXF005	LC Pigtails, OM4, 1F, 1.5mtr - Pkt of 6 - Colour Coded
FAXLCUCOC-XXF005	LC Pigtails, OM4, 1F, 1.5mtr - Pkt of 12 - Colour Coded
FAXSCUCOA-XXF005	SC Pigtails, OM4, 1F, 0.9mm, 1.5mtr - Pkt of 6
FAXSCUCOC-XXF005	SC Pigtails, OM4, 1F, 0.9mm, 1.5mtr - Pkt of 12
<b>OS2 Pigtails, 9/125µm, 1 Fibre, 900um, 1.5mtr, LSZH Tight Buffered Fibre</b>	
FAWLCUCOA-XXF005	LC Pigtails, OS2, 1F, 0.9mm, 1.5m - Pkt of 6
FAWLCUCOC-XXF005	LC Pigtails, OS2, 1F, 0.9mm, 1.5m - Pkt of 12
FAWSCUCOA-XXF005	SC Pigtails, OS2, 1F, 0.9mm, 1.5mtr - Pkt of 6 - Colour Coded
FAWSCUCOC-XXF005	SC Pigtails, OS2, 1F, 0.9mm, 1.5mtr - Pkt of 12 - Colour Coded
<b>OS2 Pigtails, 9/125µm, 1 Fibre, 900um, 1.5mtr, LSZH Tight Buffered Fibre</b>	
ACGLGUCNC-XXF005	Pigtail, A1, LCA, 1F, 1.5m Long, 900 Micron, Pkt of 12 Colour Coded
ACGSGUCNC-XXF005	Pigtail, A1, SCA, 1F, 1.5m Long, 900 Micron, Pkt of 12 Colour Coded

[Back to contents page](#)

# Fibre Solutions

## Fibre Connectivity - MPO\*



760241517



760241518



760251098

### G2 & EPX Rackmount Fibre Trays - 19"

MID Part Number	Description
<b>Fixed and Sliding Panels</b>	
These enclosures are best suited for MPO or Splice Cassettes	
760241517	1U Fixed Panel, accepts (4) G2 modules or adapter packs, up to 48 DPX LC or 32 MPO ports
760241518	1U Fixed Recessed ANGLED Panel, accepts (4) G2 modules or adapter packs, up to 48 duplex LC or 32 MPO ports
760251098	1U EPX Fixed Panel, accepts (4) G2 modules or adapter packs, up to 48 DPX LC or 32 MPO ports

\* CommScope's MPO solution complies with IEC 61754-7 MPO Connector Family. MTP componentry may be used in the connector.



MPO Singlemode



MPO-12 OM4, 1x12f MPO port



MPO-24 OM4, 2x12f MPO ports



### G2 MPO\* Adapter Modules

#### G2 Modules MPO-LC - OM4, for 12 Fibre MPO cables, use with G2 Panels and Drawers

MID Part Number	Description
Modules accept 12 fibre MPO connectors. ie: 24F Adapter Pack accepts 2 x 12 fibre MPO connectors.	
760242493	G2 MPO-12 Distribution Module, 1x12F MPO pinned to 12F LC, Method A Pair Straight OM4, Aqua
760242494	G2 MPO-12 Distribution Module, 1x12F MPO pinned to 12F LC, Method A Pair Flipped OM4, Aqua
760242495	G2 MPO-12 Distribution Module, 2x12F MPO pinned to 24F LC, Method A Pair Straight OM4, Aqua
760242496	G2 MPO-12 Distribution Module, 2x12F MPO pinned to 24F LC, Method A Pair Flipped OM4, Aqua

#### G2 Modules MPO-LC - OS2, for 12 Fibre MPO cables, use with AGILE G2 Panels and Drawers

760242498	G2 MPO-12 Distribution Module, 1x12F MPO pinned to 12F LC, Method A Pair Straight Singlemode, Blue
760242499	G2 MPO-12 Distribution Module, 1x12F MPO pinned to 12F LC, Method A Pair Flipped Singlemode, Blue
760242500	G2 MPO-12 Distribution Module, 2x12F MPO pinned to 24F LC, Method A Pair Straight Singlemode, Blue
760242501	G2 MPO-12 Distribution Module, 2x12F MPO pinned to 24F LC, Method A Pair Flipped Singlemode, Blue

#### G2 Modules, MPO-MPO, use with G2 Panels and Drawers

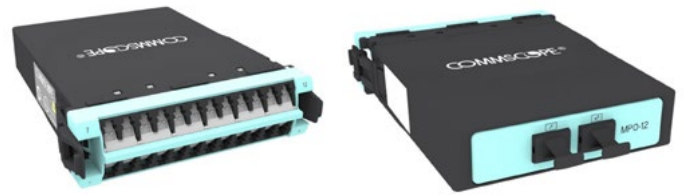
760242723	G2 Distribution Adapter Pack, 6 x MPO, Method A
760242724	G2 Distribution Adapter Pack, 8 x MPO, Method A

\* CommScope's MPO solution complies with IEC 61754-7 MPO Connector Family. MTP componentry may be used in the connector.

[Back to contents page](#)

# Fibre Solutions

## Fibre Patch Cords



MPO-24 OM4, 1 x 24f MPO port

G2 MPO* Modules for Pre-terminated 1x24F MPO Cables	
G2 Modules MPO-LC - OM4, for 24 Fibre MPO cables, use with G2 Panels and Drawers	
MID Part Number	Description
760242497	G2 MPO-24 Distribution Module, 1x24F MPO pinned to 24F LC, Method A Pair Straight OM4, Aqua
760242502	G2 MPO-24 Distribution Module, 1x24F MPO pinned to 24F LC, Method A Pair Flipped OM4, Aqua
* CommScope's MPO solution complies with IEC 61754-7 MPO Connector Family. MTP componentry may be used in the connector.	

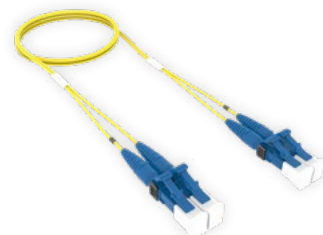
[Back to contents page](#)

# Fibre Solutions

## Fibre Patch Cords



Patch Cord OM4 UPC LC-LC



Patch Cord OS2 UPC LC-LC

Fibre Optic Patch Cords UPC	
MID Part Number	Description
<b>OM4, LC-LC 2 FIBRE 1.6MM AQUA CORD - LSZH</b>	
FFXLCLC42-MXM001	Patchcord, OM4, LC, 2F, 1.0m
FFXLCLC42-MXM002	Patchcord, OM4, LC, 2F, 2.0m
FFXLCLC42-MXM003	Patchcord, OM4, LC, 2F, 3.0m
FFXLCLC42-MXM005	Patchcord, OM4, LC, 2F, 5.0m
FFXLCLC42-MXM010	Patchcord, OM4, LC, 2F, 10.0m
<b>OM4, SC-SC 2 FIBRE 1.6MM AQUA CORD - LSZH</b>	
FFXSCSC42-MXM001	Patchcord, OM4, SC, 2F, 1.0m
FFXSCSC42-MXM002	Patchcord, OM4, SC, 2F, 2.0m
FFXSCSC42-MXM003	Patchcord, OM4, SC, 2F, 3.0m
FFXSCSC42-MXM005	Patchcord, OM4, SC, 2F, 5.0m
FFXSCSC42-MXM010	Patchcord, OM4, SC, 2F, 10.0m
<b>OS2, LC-LC 2 FIBRE 1.6MM YELLOW CORD - LSZH</b>	
FFWLCLC42-JXM001	Patchcord, OS2, LC, 2F, 1.0m
FFWLCLC42-JXM002	Patchcord, OS2, LC, 2F, 2.0m
FFWLCLC42-JXM003	Patchcord, OS2, LC, 2F, 3.0m
FFWLCLC42-JXM005	Patchcord, OS2, LC, 2F, 5.0m
FFWLCLC42-JXM010	Patchcord, OS2, LC, 2F, 10.0m
<b>OS2, SC-SC 2 FIBRE 1.6MM YELLOW CORD - LSZH</b>	
FFWSCSC42-JXM001	Patchcord, OS2, SC, 2F, 1.0m
FFWSCSC42-JXM002	Patchcord, OS2, SC, 2F, 2.0m
FFWSCSC42-JXM003	Patchcord, OS2, SC, 2F, 3.0m
FFWSCSC42-JXM005	Patchcord, OS2, SC, 2F, 5.0m
FFWSCSC42-JXM010	Patchcord, OS2, SC, 2F, 10.0m
Other Patch Cords available on request.	

[Back to contents page](#)

# Fibre Solutions

## Fibre Patch Cords



OS2 SCA-SCA



OS2 LCA-LCA

Fibre Optic Patch Cords APC	
MID Part Number	Description
<b>OS2, LCA-LCA 2 FIBRE 1.6MM AQUA CORD - LSZH</b>	
FEWLALA42-JXM001	Patchcord, OS2, LCA, 2F, 1.0m
FEWLALA42-JXM002	Patchcord, OS2, LCA, 2F, 2.0m
FEWLALA42-JXM003	Patchcord, OS2, LCA, 2F, 3.0m
FEWLALA42-JXM005	Patchcord, OS2, LCA, 2F, 5.0m
FEWLALA42-JXM010	Patchcord, OS2, LCA, 2F, 10.0m
<b>OS2, SCA-SCA 2 FIBRE 1.6MM AQUA CORD - LSZH</b>	
FEWSASA42-JXM001	Patchcord, OS2, SCA, 2F, 1.0m
FEWSASA42-JXM002	Patchcord, OS2, SCA, 2F, 2.0m
FEWSASA42-JXM003	Patchcord, OS2, SCA, 2F, 3.0m
FEWSASA42-JXM005	Patchcord, OS2, SCA, 2F, 5.0m
FEWSASA42-JXM010	Patchcord, OS2, SCA, 2F, 10.0m
Other Patch Cords available on request.	

[Back to contents page](#)

# Fibre Solutions

## Fibre Patch Cords



MPO to MPO OM4 Patch Cable

<b>MPO* Patch Cable, 3.2mm OSD, LSZH, OM4, 12 Fibre - Straight</b>	
MPO Patch cables are best suited for Data Centre environments or installed on dedicated pathways (FiberGuide)	
MID Part Number	Description
ARXMPMPGD-MAM005	MPO to MPO Patch Cable OM4 12 Fibre LSZH, Indoor Straight - 5mtr
ARXMPMPGD-MAM006	MPO to MPO Patch Cable OM4 12 Fibre LSZH, Indoor Straight - 6mtr
ARXMPMPGD-MAM007	MPO to MPO Patch Cable OM4 12 Fibre LSZH, Indoor Straight - 7mtr
ARXMPMPGD-MAM008	MPO to MPO Patch Cable OM4 12 Fibre LSZH, Indoor Straight - 8mtr
ARXMPMPGD-MAM009	MPO to MPO Patch Cable OM4 12 Fibre LSZH, Indoor Straight - 9mtr
ARXMPMPGD-MAM010	MPO to MPO Patch Cable OM4 12 Fibre LSZH, Indoor Straight - 10mtr
ARXMPMPGD-MAM015	MPO to MPO Patch Cable OM4 12 Fibre LSZH, Indoor Straight - 15mtr
ARXMPMPGD-MAM020	MPO to MPO Patch Cable OM4 12 Fibre LSZH, Indoor Straight - 20mtr
ARXMPMPGD-MAM025	MPO to MPO Patch Cable OM4 12 Fibre LSZH, Indoor Straight - 25mtr
ARXMPMPGD-MAM030	MPO to MPO Patch Cable OM4 12 Fibre LSZH, Indoor Straight - 30mtr
Lengths 35-50 meters available on request.	
*CommScope's MPO solution complies with IEC 61754-7 MPO Connector Family. MTP componentry may be used in the multi-fibre connector.	

[Back to contents page](#)

# Fibre Solutions

## Fibre Patch Cords



MPO to MPO OM4 Trunk Cable

### MPO\* Trunk Cable, 6.4mm OSD, LSZH, OM4, 12 Fibre - Straight

Trunk cables best suited for Backbone cabling on common pathways

MID Part Number	Description
AJXMPMPAD-MAM010	MPO to MPO Trunk OM4 12 Fibre LSZH, indoor Straight 10mtr
AJXMPMPAD-MAM015	MPO to MPO Trunk OM4 12 Fibre LSZH, indoor Straight 15mtr
AJXMPMPAD-MAM020	MPO to MPO Trunk OM4 12 Fibre LSZH, indoor Straight 20mtr
AJXMPMPAD-MAM025	MPO to MPO Trunk OM4 12 Fibre LSZH, indoor Straight 25mtr
AJXMPMPAD-MAM030	MPO to MPO Trunk OM4 12 Fibre LSZH, indoor Straight 30mtr
AJXMPMPAD-MAM035	MPO to MPO Trunk OM4 12 Fibre LSZH, indoor Straight 35mtr
AJXMPMPAD-MAM040	MPO to MPO Trunk OM4 12 Fibre LSZH, indoor Straight 40mtr
AJXMPMPAD-MAM045	MPO to MPO Trunk OM4 12 Fibre LSZH, indoor Straight 45mtr
AJXMPMPAD-MAM050	MPO to MPO Trunk OM4 12 Fibre LSZH, indoor Straight 50mtr
AJXMPMPAD-MAM055	MPO to MPO Trunk OM4 12 Fibre LSZH, indoor Straight 55mtr
AJXMPMPAD-MAM060	MPO to MPO Trunk OM4 12 Fibre LSZH, indoor Straight 60mtr
AJXMPMPAD-MAM070	MPO to MPO Trunk OM4 12 Fibre LSZH, indoor Straight 70mtr
AJXMPMPAD-MAM080	MPO to MPO Trunk OM4 12 Fibre LSZH, indoor Straight 80mtr
AJXMPMPAD-MAM090	MPO to MPO Trunk OM4 12 Fibre LSZH, indoor Straight 90mtr
AJXMPMPAD-MAM100	MPO to MPO Trunk OM4 12 Fibre LSZH, indoor Straight 100mtr

Length available up to 300m on request

\*CommScope's MPO solution complies with IEC 61754-7 MPO Connector Family. MTP componentry may be used in the multi-fibre connector.

[Back to contents page](#)

# Fibre Solutions

## Fibre Patch Cords



MPO-MPO 24f Patch Cable



MPO-MPO 24f Trunk cable

### MPO\* Patch Cable, 3.8mm OSD, LSZH, OM4, 24 Fibre - Straight

MPO Patch cables are best suited for Data Centre environments or installed on dedicated pathways (FiberGuide)

MID Part Number	Description
ARX2P2PHF-MAM005	MPO to MPO Patch Cord, OM4, 24 Fibre (Straight), Aqua - 5mtr
ARX2P2PHF-MAM006	MPO to MPO Patch Cord, OM4, 24 Fibre (Straight), Aqua - 6mtr
ARX2P2PHF-MAM007	MPO to MPO Patch Cord, OM4, 24 Fibre (Straight), Aqua - 7mtr
ARX2P2PHF-MAM008	MPO to MPO Patch Cord, OM4, 24 Fibre (Straight), Aqua - 8mtr
ARX2P2PHF-MAM009	MPO to MPO Patch Cord, OM4, 24 Fibre (Straight), Aqua - 9mtr
ARX2P2PHF-MAM010	MPO to MPO Patch Cord, OM4, 24 Fibre (Straight), Aqua - 10mtr
ARX2P2PHF-MAM015	MPO to MPO Patch Cord, OM4, 24 Fibre (Straight), Aqua - 15mtr
ARX2P2PHF-MAM020	MPO to MPO Patch Cord, OM4, 24 Fibre (Straight), Aqua - 20mtr
ARX2P2PHF-MAM025	MPO to MPO Patch Cord, OM4, 24 Fibre (Straight), Aqua - 25mtr
ARX2P2PHF-MAM030	MPO to MPO Patch Cord, OM4, 24 Fibre (Straight), Aqua - 30mtr

Lengths 35-50 meters available on request.

### MPO\* Trunk Cable, 7.4mm OSD, LSZH, OM4, 24 Fibre - Straight

MPO Trunk cables best suited for Backbone cabling on common pathways

MID Part Number	Description
AJX2P2PBF-MVM030	MPO to MPO Trunk Cable, OM4, 24 Fibre (Straight), Aqua - 30mtr
AJX2P2PBF-MVM040	MPO to MPO Trunk Cable, OM4, 24 Fibre (Straight), Aqua - 40mtr
AJX2P2PBF-MVM050	MPO to MPO Trunk Cable, OM4, 24 Fibre (Straight), Aqua - 50mtr
AJX2P2PBF-MVM060	MPO to MPO Trunk Cable, OM4, 24 Fibre (Straight), Aqua - 60mtr
AJX2P2PBF-MVM070	MPO to MPO Trunk Cable, OM4, 24 Fibre (Straight), Aqua - 70mtr
AJX2P2PBF-MVM080	MPO to MPO Trunk Cable, OM4, 24 Fibre (Straight), Aqua - 80mtr
AJX2P2PBF-MVM090	MPO to MPO Trunk Cable, OM4, 24 Fibre (Straight), Aqua - 90mtr
AJX2P2PBF-MVM100	MPO to MPO Trunk Cable, OM4, 24 Fibre (Straight), Aqua - 100mtr

Lengths available up to 300m on request

\*CommScope's MPO solution complies with IEC 61754-7 MPO Connector Family. MTP componentry may be used in the multi-fibre connector.

[Back to contents page](#)



# Fibre Solutions

## Fibre Patch Cords



MPO to MPO OS2 Patch Cable

MPO* Patch Cable, 3.2mm OSD, LSZH, OS2, 12 Fibre - Straight	
MPO Patch cables are best suited for Data Centre environments or installed on dedicated pathways (FiberGuide)	
MID Part Number	Description
ARGMPMPGD-JAM005	MPO to MPO Patch Cable, OS2, 12 Fibre (straight), Yellow - 5mtr
ARGMPMPGD-JAM006	MPO to MPO Patch Cable, OS2, 12 Fibre (straight), Yellow - 6mtr
ARGMPMPGD-JAM007	MPO to MPO Patch Cable, OS2, 12 Fibre (straight), Yellow - 7mtr
ARGMPMPGD-JAM008	MPO to MPO Patch Cable, OS2, 12 Fibre (straight), Yellow - 8mtr
ARGMPMPGD-JAM009	MPO to MPO Patch Cable, OS2, 12 Fibre (straight), Yellow - 9mtr
ARGMPMPGD-JAM010	MPO to MPO Patch Cable, OS2, 12 Fibre (straight), Yellow - 10mtr
ARGMPMPGD-JAM015	MPO to MPO Patch Cable, OS2, 12 Fibre (straight), Yellow - 15mtr
ARGMPMPGD-JAM020	MPO to MPO Patch Cable, OS2, 12 Fibre (straight), Yellow - 20mtr
ARGMPMPGD-JAM025	MPO to MPO Patch Cable, OS2, 12 Fibre (straight), Yellow - 25mtr
ARGMPMPGD-JAM030	MPO to MPO Patch Cable, OS2, 12 Fibre (straight), Yellow - 30mtr
Lengths 35-50 meters available on request.	
*CommScope's MPO solution complies with IEC 61754-7 MPO Connector Family. MTP componentry may be used in the multi-fibre connector.	

[Back to contents page](#)

# Fibre Solutions

## Fibre Patch Cords



MPO to MPO OS2 Trunk Cable

<b>MPO* Trunk Cable, 6.4mm OSD, LSZH, OS2, 12 Fibre - Straight</b>	
Trunk cables best suited for Backbone cabling on common pathways	
AJGMPMPAD-JAM010	MPO to MPO Trunk Cable, OS2 SM, LSZH, 12 Fibre, 10mtr
AJGMPMPAD-JAM015	MPO to MPO Trunk Cable, OS2 SM, LSZH, 12 Fibre, 15mtr
AJGMPMPAD-JAM020	MPO to MPO Trunk Cable, OS2 SM, LSZH, 12 Fibre, 20mtr
AJGMPMPAD-JAM025	MPO to MPO Trunk Cable, OS2 SM, LSZH, 12 Fibre, 25mtr
AJGMPMPAD-JAM030	MPO to MPO Trunk Cable, OS2 SM, LSZH, 12 Fibre, 30mtr
AJGMPMPAD-JAM035	MPO to MPO Trunk Cable, OS2 SM, LSZH, 12 Fibre, 35mtr
AJGMPMPAD-JAM040	MPO to MPO Trunk Cable, OS2 SM, LSZH, 12 Fibre, 40mtr
AJGMPMPAD-JAM045	MPO to MPO Trunk Cable, OS2 SM, LSZH, 12 Fibre, 45mtr
AJGMPMPAD-JAM050	MPO to MPO Trunk Cable, OS2 SM, LSZH, 12 Fibre, 50mtr
AJGMPMPAD-JAM055	MPO to MPO Trunk Cable, OS2 SM, LSZH, 12 Fibre, 55mtr
AJGMPMPAD-JAM060	MPO to MPO Trunk Cable, OS2 SM, LSZH, 12 Fibre, 60mtr
AJGMPMPAD-JAM070	MPO to MPO Trunk Cable, OS2 SM, LSZH, 12 Fibre, 70mtr
AJGMPMPAD-JAM080	MPO to MPO Trunk Cable, OS2 SM, LSZH, 12 Fibre, 80mtr
AJGMPMPAD-JAM090	MPO to MPO Trunk Cable, OS2 SM, LSZH, 12 Fibre, 90mtr
AJGMPMPAD-JAM100	MPO to MPO Trunk Cable, OS2 SM, LSZH, 12 Fibre, 100mtr
Lengths available up to 300m on request	
*CommScope's MPO solution complies with IEC 61754-7 MPO Connector Family. MTP componentry may be used in the multi-fibre connector.	

# Fibre Solutions

## Fibre Accessories



Patch Cable Gland Kit



Trunk Cable Gland Kit



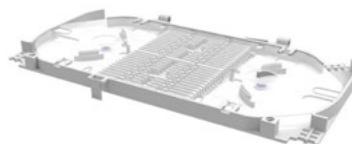
Quick-Fit to G2 Adaptor



G2 Panel Blank Adaptor (4 pack)

### Fibre Panel Accessories

MID Part Number	Description
760242678	Patch cord fitting kit with 12 cable glands
760242679	Trunk fitting kit with 12 cable glands
760242369	UCP/Quick-Fit to G2 Adapter Bracket Kit (kit of 4)
760109462	G2 Mod Panel Blank Adapter Pack, 4 Panels



G2 Splice Tray



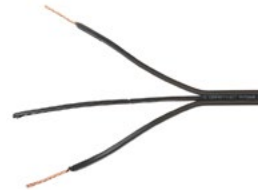
Splice Protector

### Fibre Splicing Accessories

760241378	Fiber Optic Splice Tray Kit, stackable, 48-fiber capacity
103897-000	Splice Protector, 45mm SMOUV (Bag of 100)
369305-000	Splice Protector, 62mm SMOUV (Bag of 100)

# Fibre Solutions

## Powered Fibre Cable Solution



PFC-S04012 - PFCS\_hybrid\_cable



PFU-P-C-O-060-02 - 2 Port

The powered fiber cabling solution combines high-performance, low-latency fiber-optic data connectivity with a copper low-voltage dc power connection. This enables the connection of any number of POE powered remote devices without the need for new conduit, bulky extra cable runs or expensive electricians. With the powered fiber cable solution, your network gains access to a vast and growing ecosystem of applications. Powered fibre can provide POE power up-to 3000 meters away from a local power source.

### POE Extender

POE Extender Units - 1 and 2 Port. Up to 60W

MID Part Number	Description
PFU-P-C-O-060-02	2-Port POE Extender. 2 x 30W capable RJ45 Ports
PFU-P-C-O-060-01	1-Port POE Extender. 1 x 60W capable RJ45 Ports

### Extender Accessories

MID Part Number	Description
FAWLUC0A-XXF005	LC Pigtails, OS2, 1F, 0.9mm, 1.5mtr - Pkt of 6 - Colour Coded
FAWLUC0C-XXF005	LC Pigtails, OS2, 1F, 0.9mm, 1.5mtr - Pkt of 12 - Colour Coded

### Powered Fibre Cable

Powered Fibre Cables. Singlemode Fibre Copper Conductor Combined into Single Cable. Flat Diametric Style

MID Part Number	Description
PFC-S04012	Powered Fibre Cable. Singlemode 4 Fibre. Indoor/Outdoor. 12AWG

### Headend Equipment - Existing/New Fibre Tray, Dc Power Supply & Sfp Modules Also Required

MID Part Number	Description
FAWLUC0C-XXF005	LC Pigtails, OS2, 1F, 0.9mm, 1.5mtr - Pkt of 12 - Colour Coded
FFWLCLC42-JXM001	Patchcord, OS2, LC, 2F, 1.0m Long
FFWLCLC42-JXM002	Patchcord, OS2, LC, 2F, 2.0m Long

\*Discuss Power Supply Options with your CommScope Account Manager

[Back to contents page](#)



CommScope pushes the boundaries of communications technology with game-changing ideas and ground-breaking discoveries that spark profound human achievement. We collaborate with our customers and partners to design, create and build the world's most advanced networks. It is our passion and commitment to identify the next opportunity and realize a better tomorrow. Discover more at [commscope.com](https://commscope.com)

#### **CUSTOMER SERVICE**

PHONE: 0800 657 663  
EMAIL: [sales.nz@commscope.com](mailto:sales.nz@commscope.com)

#### **TECHNICAL ASSISTANCE**

PHONE: 0800 657 663  
[www.commscope.com/support-tac](https://www.commscope.com/support-tac)  
Log request online <https://extapps.commscope.com/supportcenter/>

#### **SALE OFFICE LOCATIONS**

Auckland  
Wellington  
Christchurch

# COMMSCOPE®

---

[commscope.com](https://commscope.com)

Visit our website or contact your local CommScope representative for more information.

© 2023 CommScope, Inc. All rights reserved.

CommScope and the CommScope logo are registered trademarks of CommScope and/or its affiliates in the U.S. and other countries. For additional trademark information see <https://www.commscope.com/trademarks>. All product names, trademarks and registered trademarks are property of their respective owners.

CO-113380-EN (011/23)